

Project Name: _____
 Location: _____
 Engineer: _____
 Submitted to: _____
 Submitted by: _____
 Reference: _____

Approval: _____
 Date: _____
 Construction: _____
 Unit #: _____
 Drawing #: _____

Performance

Indoor Unit Model No:	Ducted
Outdoor Unit Model No:	REYQ72PATJ
Cooling Capacity (Btu/hr):	70000
Sensible Capacity (Btu/hr):	0
Cooling Input Power (kW):	
Cooling EER (Btu/hr / kW):	12.6
SEER:	N/A
Heating Capacity (Btu/hr):	77000
Heating Input Power (kW):	
Heating COP (Btu/hr / Btu/hr):	3.5
HSPF:	N/A

Indoor Unit Type:	
Condensing Unit Type:	6-Ton VRV-III Heat Recovery
Cooling Nominal Conditions	Indoor: 80°F DB/67°F WB
	Outdoor: 95°F DB/75°F WB
	Water Cooled:
Heating Nominal Conditions	Indoor: 47°F DB/43°F WB
	Outdoor: 47°F DB/43°F WB
	Water Cooled:
Nominal Piping Length	25
Nominal Height Separation	0
Nominal Water Flow Rate	

Indoor Unit Details

Power Supply (V/Hz/Ph):	N/A
Power Supply Connections:	
Min. Circuit Amps MCA (A):	
Max. Fusible Amps MFA (A):	
Dimensions (HxWxD):	N/A
Panel (HxWxD):	N/A
Net Weight (lbs):	
Weight with Panel (lbs):	

Airflow Rate (CFM wet coil)	N/A
Moisture Removal (pt/h):	
Gas Pipe Connection (inch):	
Liquid Pipe Connection (inch):	
Condensate Connection (inch):	
Sound Pressure Level (dBA):	
Sound Power Level (dBA):	
Nominal External Static Pressure (inH2O)	
Max Ext Static Pressure (inH2O)	

Condensing Unit Details

Power Supply (V/Hz/Ph):	208-230/60/3ph
Power Supply Connections:	L1, L2, L3 Ground
Min. Circuit Amps MCA (A):	36.1
Max. Fusible Amps MFA (A):	40
Max. Starting Current MSC(A):	131
Rated Load Amps RLA (A):	4.8+14.0
Total Overcurrent Amps (A):	53.8
Dimensions (HxWxD):	66-1/8x51-3/16x30-1/8
Net Weight (lbs):	730
Compressor Type:	Inverter
Capacity Control Range (%):	20 - 100
Capacity Index Limit:	43.2 - 93.5 (130%)

Airflow Rate (CFM):	6700
Gas Pipe Connection (inch):	3/4
Liquid Pipe Connection (inch):	3/8
H/L Pressure Connection (inch):	5/8
H/L Equalizing Connection (inch):	
Water Inlet Connection (inch FPT):	
Water Outlet Connection (inch FPT):	
Condensate Drain Outlet (inch FPS):	
Sound Pressure Level (dBA):	58
Sound Power Level (dBA):	
Unit Heat Rejection (kW):	
Max. No. of Indoor Units:	12

System Details

Refrigerant Type:	R-410A
Holding Refrigerant Charge (lbs):	22.7
Additional Charge (oz/ft):	install data
Pre-charge Piping (Length ft):	-
Max. Pipe Length (Total ft):	540 ft
Max. Pipe Length (Vertical ft):	164 ft (295 ft) / 295 ft

Cooling Operation Range (°F):	(-4) 23 - 122
Cooling Range w/Baffle (°F):	
Heating Operation Range (°F):	0 - 77 / -4 - 60
Heating Range w/Baffle (°F):	
Cooling Inlet Water Temp (°F):	
Heating Inlet Water Temp (°F):	
Water Flow Range (GPM):	

Submittal Data Sheet

Project Name: _____

Location: _____

Engineer: _____

Submitted to: _____

Submitted by: _____

Reference: _____

Approval: _____

Date: _____

Construction: _____

Unit #: _____

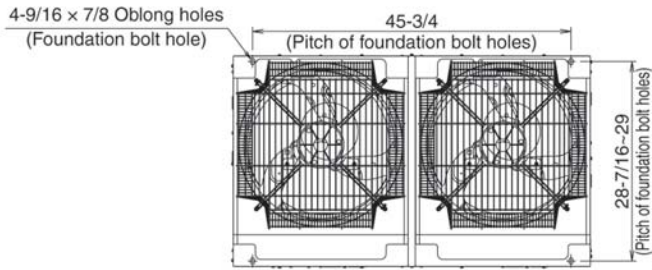
Drawing #: _____



Project Name: _____
 Location: _____
 Engineer: _____
 Submitted to: _____
 Submitted by: _____
 Reference: _____

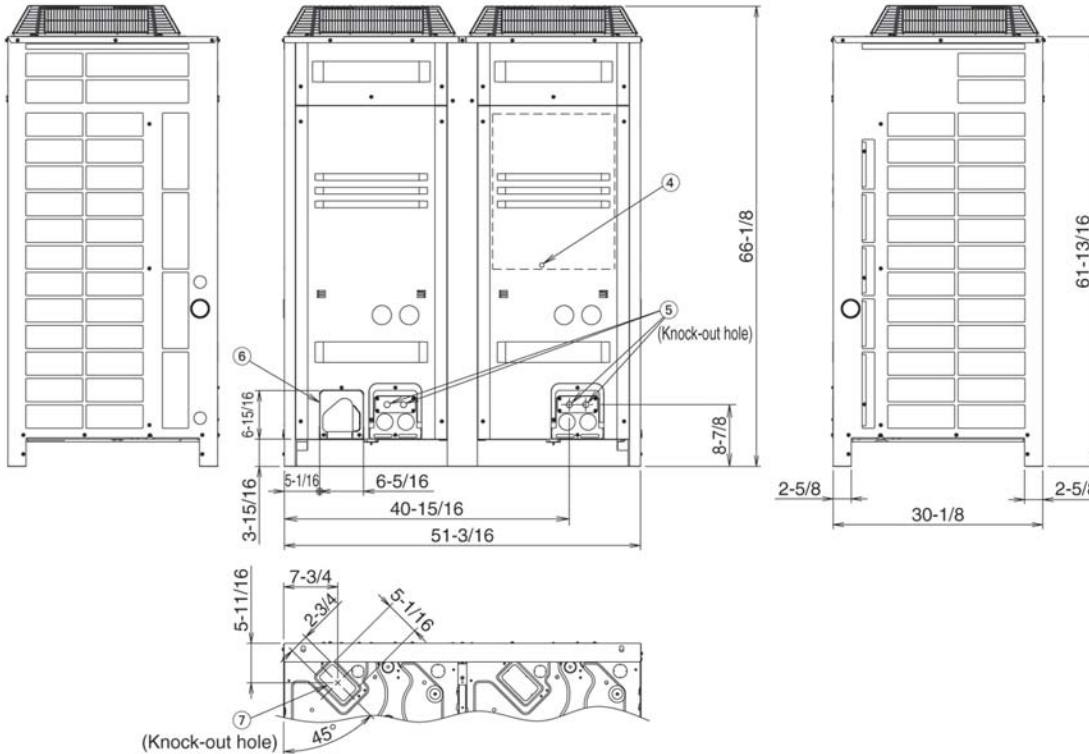
Approval: _____
 Date: _____
 Construction: _____
 Unit #: _____
 Drawing #: _____

Dimensional Drawing - Condensing Unit



Notes)

1. For piping connection method (front and bottom sides), see the installation manual.
2. High and low pressure gas pipe
 - φ 5/8 Brazing connection...REYQ72P
 - φ 3/4 Brazing connection...REYQ96, 120P
 - φ 7/8 Brazing connection...REYQ144PT
- Gas pipe
 - φ 1-1/8 Brazing connection...RXYQ72PT
- Suction gas pipe
 - φ 3/4 Brazing connection...REYQ72P
 - φ 7/8 Brazing connection...REYQ96P
 - φ 1-1/8 Brazing connection...REYQ120, 144PT
- Liquid pipe
 - φ 3/8 Brazing connection...REYQ72, 96P
 - φ 1/2 Brazing connection...REYQ120, 144PT, RXYQ144PT
3. *shows the dimensions after fixing the accessory pipes.



Project Name: _____
Location: _____
Engineer: _____
Submitted to: _____
Submitted by: _____
Reference: _____

Approval: _____
Date: _____
Construction: _____
Unit #: _____
Drawing #: _____

Notes

Std U.S. Warranty: 6yrs Compressor, 1yrs Parts, 1yr Limited Labor